



The Enterprise AFP/IPDS Printing Solution

OnePrint ServerExpress

- Software-only solution to your printing problems
- Improves productivity
- Reduces network congestion
- Gives better response to user needs
- Lowers capital and operational costs
- Eliminates image clipping due to differences between IPDS and ASCII printers
- Provides support across gateways and routers
- Runs on dedicated PC (Intel) platform
- Extends AFP/IPDS printing capabilities to remote locations without the need for SNA host equipment
- Uses existing LAN printers for IPDS documents leveraging your investment in Client-Server technology
- Allows connections to a Mainframe (over SNA and/or TCP/IP network) and an AS/400 (over TCP/IP network)
- Enables up to 128 simultaneous SNA LUs or TCP/IP host connections with mainframes and/or AS/400s running a TCP/IP stack
- Runs with minimal intervention
- Delivers host documents where and when you need them
- Offers user friendly Logfile for easy error detection and correction
- Allows user to reconfigure specific ports in case of a printer malfunction
- Offers full error recovery capabilities

Supports Popular Networking Protocols

OnePrint ServerExpress' powerful networking capabilities over TCP/IP and IPX provide printer connectivity anywhere in the world (internet/intranet). This allows you to direct host print jobs to your remote branch offices, with true end-to-end IPDS and full data integrity.

Supports Popular Printer Types

Each OnePrint ServerExpress allows you to distribute print jobs on up to 128 printers. A virtually unlimited number of printers can be attained by adding more OnePrint ServerExpress units.

OnePrint ServerExpress enables delivery of AFP/IPDS

host documents to any LAN-attached ASCII printer.

Whatever the printer, the results are the same—host documents will always be printed exactly the way you expect them.

3270 Functionality

OnePrint ServerExpress handles host print jobs in exactly the same way as an IBM 3174 cluster controller.

It provides central management and dynamic control over setup, print routing and problem resolution for all distributed LAN-attached printers. Your personnel continue working like before but with the added benefit of dynamic (on-line) management and reconfiguration.

(continued on back page)



(continued from front page)

Now, you can print any host document to any target printer at any time.

Powerful Management

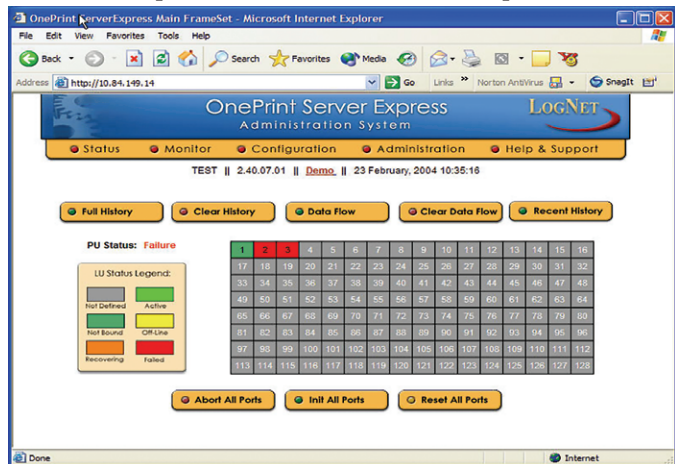
OnePrint ServerExpress, designed with your network managers in mind, provides host-centric control with the efficiency of a client server application. Use a standard Web browser to manage and configure **OnePrint ServerExpress** settings, monitor status, track the latest print jobs and hyperlink to online support documentation.

Leverages your Investment

OnePrint ServerExpress helps you get the most of your existing technology. While other solutions require expensive and repeated investments in controllers, printers or printer interface devices, OnePrint works with your existing LAN/WAN technology.

Web Console

The Web Console provides platform independent monitoring, configuration, and on-line documentation of the **OnePrint ServerExpress** Console from a standard Web browser. This allows the System Administrator to configure and monitor the **OnePrint ServerExpress** using a standard Web browser (i.e., Netscape or Microsoft Internet Explorer).



Optional Features

- FAX server support (Bit-mapped PCL)
- Simultaneous host connections, supporting both SNA and UNIX hosts (i.e. RS/6000, SUN, VAX, HP9000)
- PDF output through third party software

OnePrint is a registered trademark. All other products and company names are trademarks of their respective owners. Due to continuing product development, specifications, capabilities and features are subject to change without notice.

TECHNICAL SPECIFICATIONS

INPUT

■ HOST SNA

IBM Mainframe running VM, MVS or VSE PU Emulation (SNA):
Downstream PU Type 2.0LU Emulation (SNA): LU Type 1 (IPDS/SCS) and LU Type 3 (DSC)

■ TCP/IP

IBM Mainframe running MVS V2R2 or higher
IBM AS/400 running OS/400 V3R1 or higher, TCP/IP configured and loaded

■ PRINTING EMULATION

PAGE PRINTERS IBM 3812, 3816, 4028

IMPACT PRINTERS IBM 3287, 4224, 4230

■ LAN CONNECTIONS

NETWORK PROTOCOLS

MAINFRAME SNA over LLC (LLC2)

MAINFRAME & AS/400 Encapsulated IPDS over TCP/IP

OUTPUT

■ NETWORK PRINTING PROTOCOL

OPERATING SYSTEMS Novell, LPD/LPR

NetBIOS over TCP/IP, Raw Printing (Port 9100)

■ ASCII PRINTER EMULATIONS

■ **LASER** PCL4, PCL5, PCL5E

Postscript
Canon – CAPSL

■ **INKJET** PCL Level 3

■ **MATRIX** Epson (FX & LQ)

PRINTER FEATURES

- Supports clipping and scaling, paper source control and color printing (matrix)

LAN CONNECTIONS

- Token Ring & Ethernet

MODELS

- IPDS Models (LUs) 8, 16, 32, 64, 96, 128
- Non-IPDS Models (LUs) 8, 16, 32, 64, 96, 128

MANAGEMENT

- OnePrint's dynamic management enables active control of specific host LU (printer) definitions and LAN printer connections

■ REMOTE MANAGEMENT METHODOLOGIES

Web Interface FTP TelNet
X Terminal Host Setup (via 3270 terminal)

HARDWARE REQUIREMENTS

- OnePrint SE is installed on a dedicated PC

■ PLATFORM

- Processor – 500 MHz & up, Pentium or AMD Processor
- RAM – Minimum of 128 MB, Maximum of 512 MB
- Hard Disk – 3 GB (minimum)

IPS INTEGRATED PRINT SOLUTIONS

1701 N. COLLINS • SUITE 140 • RICHARDSON • TEXAS • 75080
1-800-873-0900 • WWW.IPSLC.COM