



The Enterprise AFP/IPDS Printing Solution

OnePrint G2 for Windows®

- *Software-only solution to your printing problems*
- *Improves productivity*
- *Reduces network congestion*
- *Gives better response to user needs*
- *Lowers capital and operational costs*
- *Eliminates image clipping due to differences between IPDS and ASCII printers*
- *Provides support across gateways and routers*
- *Runs on Windows Server 2000 or 2003 platform*
- *Extends AFP/IPDS printing capabilities to remote locations*
- *Uses existing LAN printers for IPDS documents leveraging your investment in Client-Server technology*
- *Allows connections to a Mainframe and an AS/400 (over TCP/IP network)*
- *Enables a large number of simultaneous host connections with mainframes and/or AS/400s running a TCP/IP stack*
- *Runs with minimal intervention*
- *Delivers host documents where and when you need them*
- *Offers user friendly Logfile for easy error detection and correction*
- *Allows user to reconfigure specific ports in case of a printer malfunction*
- *Offers full error recovery capabilities*

OnePrint G2 is the second generation of this powerful and versatile server-based print management platform that enables Mainframe and/or Midrange print job distribution over TCP/IP to any printer in a Windows environment.

Supports Popular Printer Types

Each OnePrint G2 for Windows® allows you to distribute print jobs on a large number of printers. A virtually unlimited number of printers can be attained by adding more OnePrint G2 for Windows® units.

OnePrint G2 for Windows® enables delivery of AFP/IPDS host documents to any predefined Windows® attached ASCII printer.

Whatever the printer, the results are the same—host documents will always be printed exactly the way you expect them.

3270 Functionality

OnePrint G2 for Windows® handles host print jobs in exactly the same way as a TCP/IP attached IPDS printer.

It provides central management and dynamic control over setup, print routing and problem resolution for all distributed LAN-attached printers. Your personnel continue working like before but with the added benefit of dynamic (on-line) management and reconfiguration. Now, you can print any host document to any target printer at any time.



Powerful Management

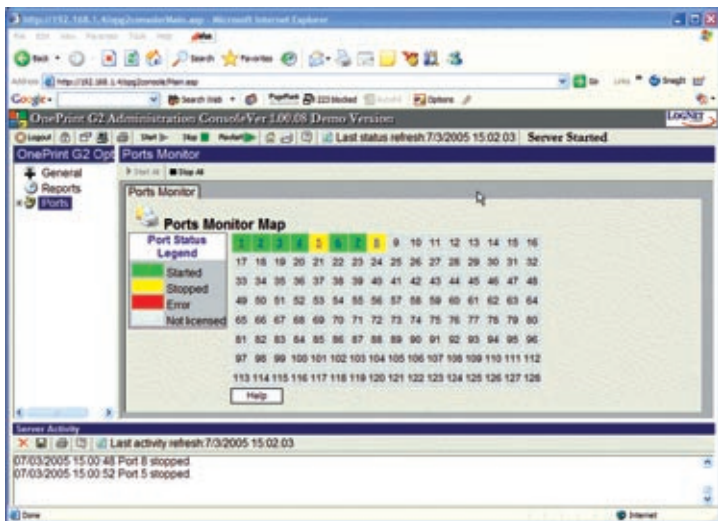
OnePrint G2 for Windows®, designed with your network managers in mind, provides host-centric control with the efficiency of a client server application. Use a standard Web browser to manage and configure **OnePrint G2 for Windows®** settings, monitor status, track the latest print jobs and hyperlink to online support documentation.

Leverages your Investment

OnePrint G2 for Windows® helps you get the most of your existing technology. While other solutions require expensive and repeated investments in controllers, printers or printer interface devices, OnePrint works with your existing LAN/WAN technology.

Web Console

The Web Console provides the System Administrator platform independent monitoring, configuration, and on-line documentation of the **OnePrint G2 for Windows®** from a standard Web browser (i.e., Netscape or Microsoft Internet Explorer).



Optional Features

- FAX server support (Bit-mapped PCL)
- PDF output through third party software

OnePrint is a registered trademark. All other products and company names are trademarks of their respective owners. Due to continuing product development, specifications, capabilities and features are subject to change without notice.

TECHNICAL SPECIFICATIONS

INPUT

- **TCP/IP**
 - **zSeries (Mainframe)**
 - PSF/MVS or PSF/VM 2.1 or higher
 - IBM TCP/IP 2.1 or higher
 - TCP Access 3.1 or higher
 - **iSeries (AS/400)**
 - OS/400 version 3.1 or higher
- **PRINTING EMULATION**
 - **PAGE PRINTERS** IBM 3812, 3816, 4028
 - **LINE PRINTERS (IMPACT)** IBM 4224, 4230
- **UPSTREAM CONNECTIVITY**
 - **Encapsulated IPDS** over TCP/IP (PPD/PPR)

OUTPUT

- **DOWNSTREAM PRINTING**
 - **Windows Print Manager** (Predefined Windows Printers)
 - **Windows Queues**
- **ASCII PRINTER EMULATION**
 - **LASER** PCL4, PCL5, PCL5e
 - **INKJET** PCL Level 3
 - **MATRIX** Epson FX and LQ
- **PRINTING FEATURES**
 - **Scaling**
 - **Clipping**
 - **Paper Source Control**

MANAGEMENT

- **ONEPRINT G2 MODELS**
 - **Installed as Windows Service**
 - **Installed as Windows Application**
- **REMOTE MANAGEMENT**
 - **WEB based console** for configuration and monitoring

SOFTWARE REQUIREMENTS

- **Windows Server 2000 or Server 2003**
- **IIS** (Internet Information Services) installed

HARDWARE REQUIREMENTS

- **PROCESSOR** – Server Class INTEL (Xeon) or AMD (Opteron) CPU
- **RAM** – Minimum of 1 GB
- **DISK SPACE REQUIRED** – 10 MB

IPS INTEGRATED PRINT SOLUTIONS

1701 N. COLLINS • SUITE 140 • RICHARDSON • TEXAS • 75080
1-800-873-0900 • WWW.IPSLC.COM